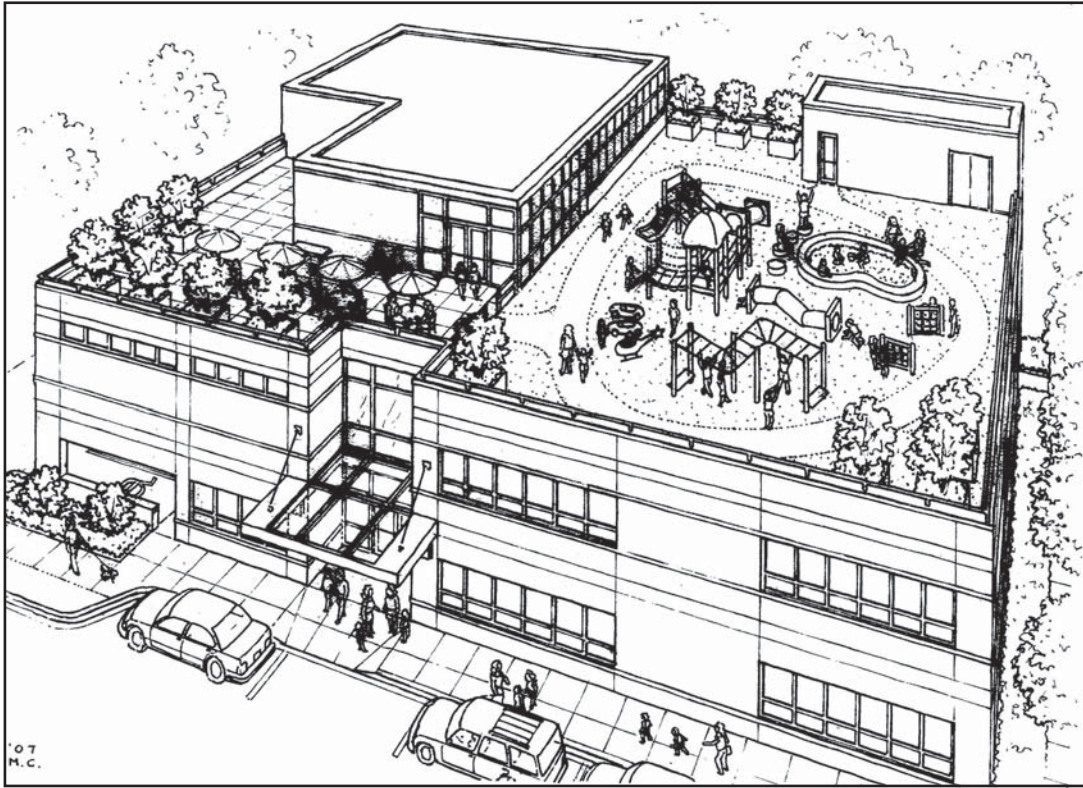


# LAKEVIEW FAMILY CENTER

Chicago, Illinois



**Client:**  
Jewish Council for Youth Services

**Location:**  
Chicago, Illinois

**Assignment:**  
Project Management  
Development Management

**Services:**

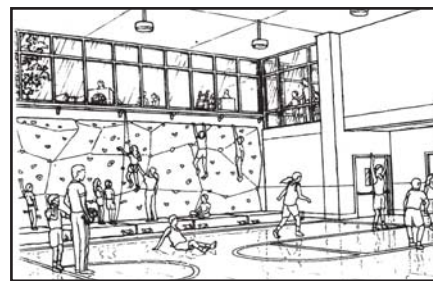
- Financial Analysis
- Schedule & Budget Management
- Permit Management
- Pre-Design Administration
- Procurement
- Program Management
- Design Administration
- Construction Administration
- Occupancy Management
- Project Accounting

**Project Facts:**

- 25,000 sq.ft. New Facility
- 9 Classrooms
- Rooftop Playground
- Gymnasium/Multi-Purpose Room

**Architect:**  
Hutter Architects

**General Contractor:**  
Berglund Construction  
(pre-construction services)



Renderings © Hutter Architects

Jewish Council for Youth Services ("JCYS") is an independent, not-for-profit agency dedicated to serving both Chicagoland's Jewish and greater communities and developing leaders who continue its tradition of volunteer service. JCYS provides educational and recreational programs that nurture individual growth and promote responsibility to others.

Since 1994, PMA has built a long-standing relationship with JCYS. In 2007 when planning for redevelopment of their Chicago Lakeview Family Center facility, PMA was retained to assist with the management of the project, including the design and construction phases.

The NAEYC-accredited and DCFS-licensed Lakeview Family Center, offers a range of early childhood, enrichment, before and after-school, and summer camp programs. The redevelopment of the existing site currently contemplates 9 classrooms, a gymnasium and multi purpose room, commercial kitchen, administration space and a rooftop playground. To date, PMA has helped JCYS to establish a design and budget for the new facility which will be used during the fundraising process. PMA led the Architect and Pre-construction Contractor through an iterative schematic design/budgeting process to ensure that JCYS was able to maximize their fundraising dollars. Once fundraising is completed, PMA will manage the completion of the design process and construction of the new facility.